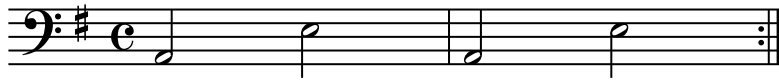


To Activate a Labrynth

Bradford W. Tilden
July 2007

Before stepping into the labrynth stand before the threshold and ask permission. Then ceremoniously step through. Sing this chant as you walk through the labrynth toward the center.

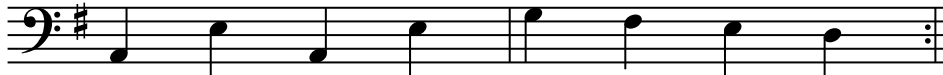
Intro



(Start this chant slowly, repeating it several times while accelerating until the half note equals the quart note)

O - O E - E

3



O - O E - E - O - O E - E

5



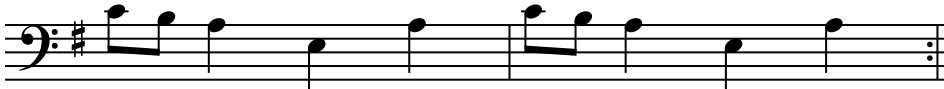
O - O - E - E - O - O - O - E

7



O - O E - E O - E O - E O - O E - E

10



O - O E O - E O - O E O - E

(Add these successive segments as the energy builds until you reach the threshold of the center of the labrynth.)

(Once you've cycled through, you may add whatever variations come to you in the moment)

Ending

(Sing as you step into the center)

(Repeat while facing the four directions with your arms outstretched, drawing in the energy to the center)

12



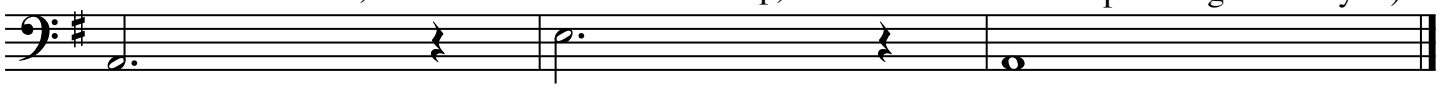
O - O E O - E O - O E - E

(Sing to the Earth, arms raised down)

(Sing to the heavens, arms raised up)

(Sing to the center point arms spreading around you)

15



O E O

AT this point, you may perform any additional activation rites. When you are done, leave the labrynth in SILENCE, walking all the way back through. Step ceremoniously out of the threshold. Turn to face the center and send it love, thanking it for letting you in. You may see a sphere or dome of colored light begin to swell from the centerpoint. The labrynth has been activated.

Once the labrynth has been activated, anytime you enter the labrynth, you may use this chant to increase the energy of the central vortex before performing any rituals, ceremonies, or journeys from within it.